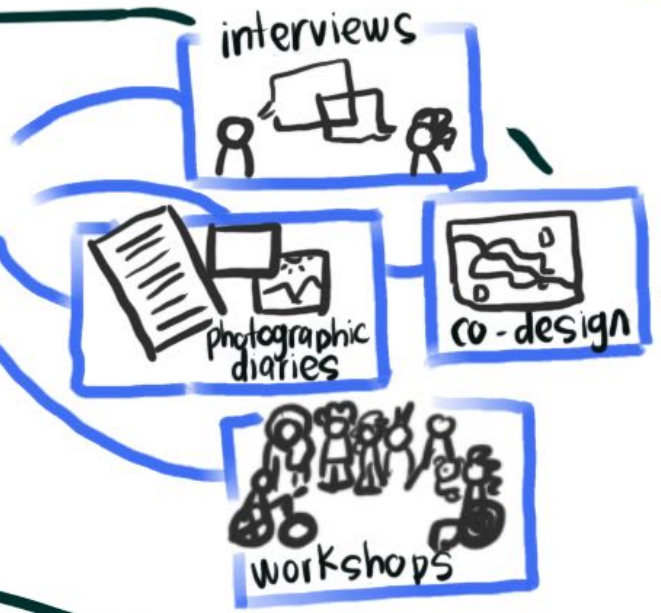


Inclusive Design and Accessibility of the built environment in Medellín, Colombia



We built with the community & found important topics



Topography

Health

Housing

Legislation

Attitudes communication & wayfinding

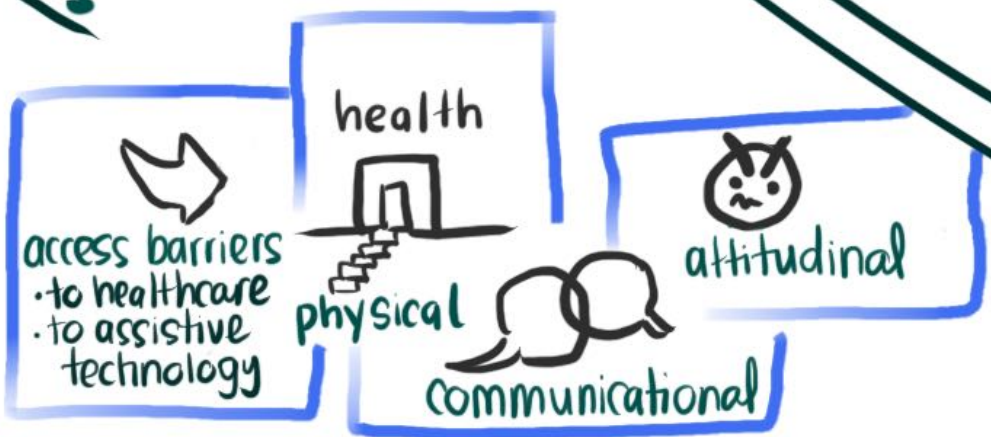
Recreation & culture

we found barriers

We must recognise it & embrace it

Inaccessible environments are an obstacle to independent living

Political Will is fundamental



Negative attitudes are a barrier
We must recognise the diversity
communicate inclusively



Recommendations

To build with the community

To recognise the local context

To find financing and implementation strategies

We want Medellín to be an inclusive city

We need:

- 1- Inclusive mobility
- 2- Enjoyable urban life
- 3- Accessible housing
- 4- Communication strategies
- 5- Thriving communities
- 6- Access to opportunities